



CommNet

COMMUNICATING THE BIOECONOMY

Newsletter N° 12 - February 2014

Editorial

This month, we are pleased to welcome you to our revamped website!

Would you like to discover the CommNet services and know more about our offer? Now it's the right time to visit our website! Take a tour of our newly designed [services section](#) and discover how we have helped [KBBE projects like yours](#). Also you can browse the [latest news](#) from the KBBE community by theme, to keep up to date. Much more to discover on [commnet.eu](#).

Entries to the [FAB Education Award](#) are now open! Are you a teacher, or someone interested in engaging ways to teach about food, agriculture, fisheries and biotechnologies to young people? Visit the [FAB Education Award](#) section on our website and spread the word to teachers.

There is still time to register for the next FREE [CommNet Communications Training](#). A small group class that will give you plenty of time to practice, contribute and focus on your project. No course fee to pay and plenty of expertise at your disposal. Don't miss out!

And finally, [our next eSeminar](#) on Veg-I-Trade will be on 13th February 2014 at 1pm CET. Watch this space!

Join our community

You can now follow CommNet on social networks! Stay tuned with the latest news from the Bioeconomy on Twitter and join the conversation in our LinkedIn Group.

Join our group   Follow @Commnet_eu 

Projects' life



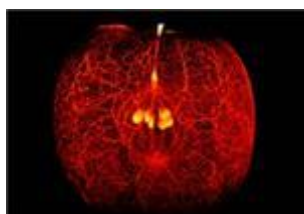
The case for low methane-emitting cattle

A new research project looks into the possibilities of adapting every aspect of cattle husbandry and selection processes to lower their greenhouse gas emissions.



Organic by-product derived biochar, a greener option

Reducing mineral fertilisers and chemicals use in agriculture is a priority. Alternatives include safe biochar and compost produced from treated organic residues from plant and animal by-products.



Looking inside food microstructures

Applying imaging techniques to food structure is helping scientists devise ways of improving the quality of processed food.

Next CommNet events...

Date	Free training	
13/02 2014 13:00 CET 12:00 UK	CommNet for Education: Veg-i-Trade in action - Third eSeminar Learn how Veg-i-Trade improves the control of food safety risks of fresh vegetables and fruits.	Know more
11/03 2014 12:30 CET 11:30 UK	CommNet Services: how we can help your project - Ninth webinar How to establish & how to shape: CommNet is here to help!	Know more
26/03 2014 13:30 CET 12:30 UK	CommNet for Education: Parasite detection and protection of fishery products – Fourth eSeminar Parasite project aims to detect, monitor and mitigate the impact of parasites in fishery products.	Know more
31/03 - 02/04 2014 Aberdeen, UK	Effective & Entrepreneurial Communications for Research Projects across the Bioeconomy - Free training! Join us for this interactive course to explore innovative, creative and effective ways of promoting your EC-funded KBBE research project.	Know more
8/04 2014 12:30 CET 11:30 UK	What's your project's story? How to tell it! - Tenth webinar - Join the webinar to hear about the fundamentals of story-telling and share examples	Know more

06/05 2014 12:30 CET 11:30 UK	Effective communications on a small budget - Eleventh webinar - Learn how to deliver smart research communications activities with relatively low budgets	Know more
-------------------------------------	------------------------------------------------------------------------------------------------------------------------------------------------------------------	---------------------------

... and other events

Date	Events	
25-26/02 2014 Dundee, UK	Environmental Management & Crop Protection Conference on environmental management, crop protection and associated topics in northern environments.	Know more
10-11/03 2014 Brussels, BE	Innovation Convention 2014 A two-day conference dedicated to knowledge transfer, innovation and entrepreneurship.	Know more
13-15/03 2014 Munich	The Power of Programming 2014 International Conference on Developmental Origins of Adiposity and Long-Term Health	Know more

PROteINSECT Survey – your chance to have your say!

Should we feed animals on insect protein? Would you eat chicken reared on fly larvae? The scientific research team at **PROteINSECT** wants to hear your views. Complete [this survey](#); results will be presented at the Insects to Feed the World Conference on May 14-17 in Wageningen, NL.

Are you interested in Bioeconomy? [Join CommNet now!](#)

The CommNet network is managed by the CommFABnet project, funded by the European Commission, Framework Programme 7, KBBE Programme, and coordinated by youris.com EEIG.

If you don't want to receive this newsletter anymore please [click here to unsubscribe](#)

